



## Wallbox AC 22 kW BASE

A wallbox is a resistant charging station for charging all electric cars on the EU market with alternating current (AC) and electric power up to 22 kW. It is designed to be used outdoors as well as in garages, with the possibility of installation on the wall (wallbox) or on the profile anchored to the ground (pole mount). According to the customer's requirements the wallbox can be equipped with a socket or a cable, if needed with a special twisted cable. The basic "Base" version can work locally, that means it can start charging automatically as soon as the vehicle is connected or after the identification with a RFID card. The power of the station can be managed in the range of 0 - 22 kW by a local unit.



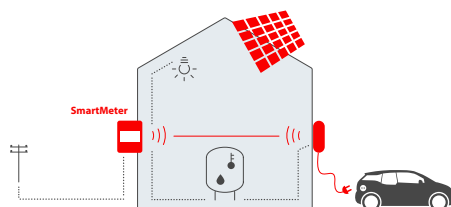
	Wallbox socket	Wallbox with integrated cable	Wallbox with twist cable	Doublebox socket	Doublebox with integrated cables	Doublebox with twist cables
Output power	11/14/17/22 kW			22/27/34/43 kW		
Max. output current	16/20/25/32 A			32/40/50/63 A		
Input voltage	3×400 V					
Cable length	w/o cable socket only	straight cable 5 m	twist cable 4 m	w/o cable 2× socket	2×straight cable 5 m	2×twist cable 4 m
Plug*	Type2 Mennekes					
IP protection	IP 66					
Weight	6 kg	8.5 kg	8.5 kg	16 kg	22 kg	22 kg
Dimensions	17×29×22 cm			35×55×14 mm		
Operating temp.	from -25°C to 40 °C					
Operating humidity	from 5 % to 95 %					
Order code	EL-WB22-BASE-S	EL-WB22-BASE-C	EL-WB22-BASE-TC	EL-WB22-BASE-TC	EL-DB22-BASE-C	EL-DB22-BASE-TC

\* WallBox can be equipped with a Type1 plug or another cable length on request

# SmartMeter

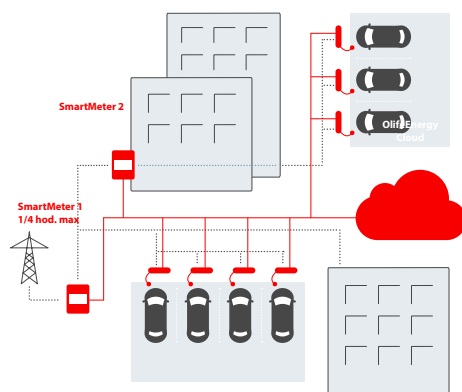
Device for maximization of electric vehicle charging speed which prevents circuit breakers to shut off unintentionally. The SmartMeter is suitable for application in homes and small companies.

SmartMeter measure the consumption of your building or dedicated circuit in real time and assesses the power available for charging station. The SmartMeter can control single charging station equipped with one or two charging points. The current is measured by split-core current transformers ensure quick and easy installation.



## Example installation

The SmartMeter is adjusting charging power of single OlifeEnergy charging station. It prevents the circuit breaker to shut-off unintentionally by it's overload. It can be set to charge only from surplus energy from photovoltaic system and charge only when remote communication signal is active. The most suitable application is for private and small company charging infrastructure.



## Power control of larger infrastructure

For company e.v. fleet, apartment building or large company establishment charging it is possible to use SmartMeter in cooperation with external control system. Together they secure stability of the complete system, preventing blackouts and penalty for exceeding maximum 1/4 hour power consumption limits.

## We provide

- Selection of a suitable wallbox according to customer requirements
- Technical documentation for preparation before installation
- Equipment installation
- Equipment inspection according to valid standards
- User training
- Post-warranty service and technical support
- Cooperation with partners in the field of photovoltaic power stations

## Accessories

- Mounting pole
- Secondary electricity meter
- Charging cables of various lengths

